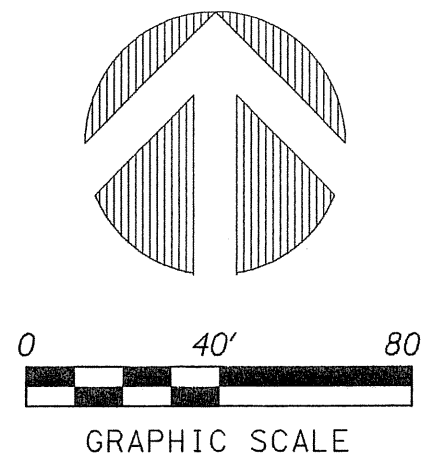


# PERIMETER

**SURVEYING & MAPPING**  
 Certificate of Authorization No. LB7264  
 Prepared by: Jeff S. Hodapp, P.S.M.  
 951 Broken Sound Parkway, Suite 320  
 Boca Raton, Florida 33487  
 Tel: (561) 241-9988  
 Fax: (561) 241-5182



### LEGEND:

- SET P.R.M. (UNLESS OTHERWISE NOTED)-4" X4" CONC. MON. WITH ALUMINUM DISK STAMPED P.R.M.#LB7264
- P.C.P.
- ⊕ CENTERLINE

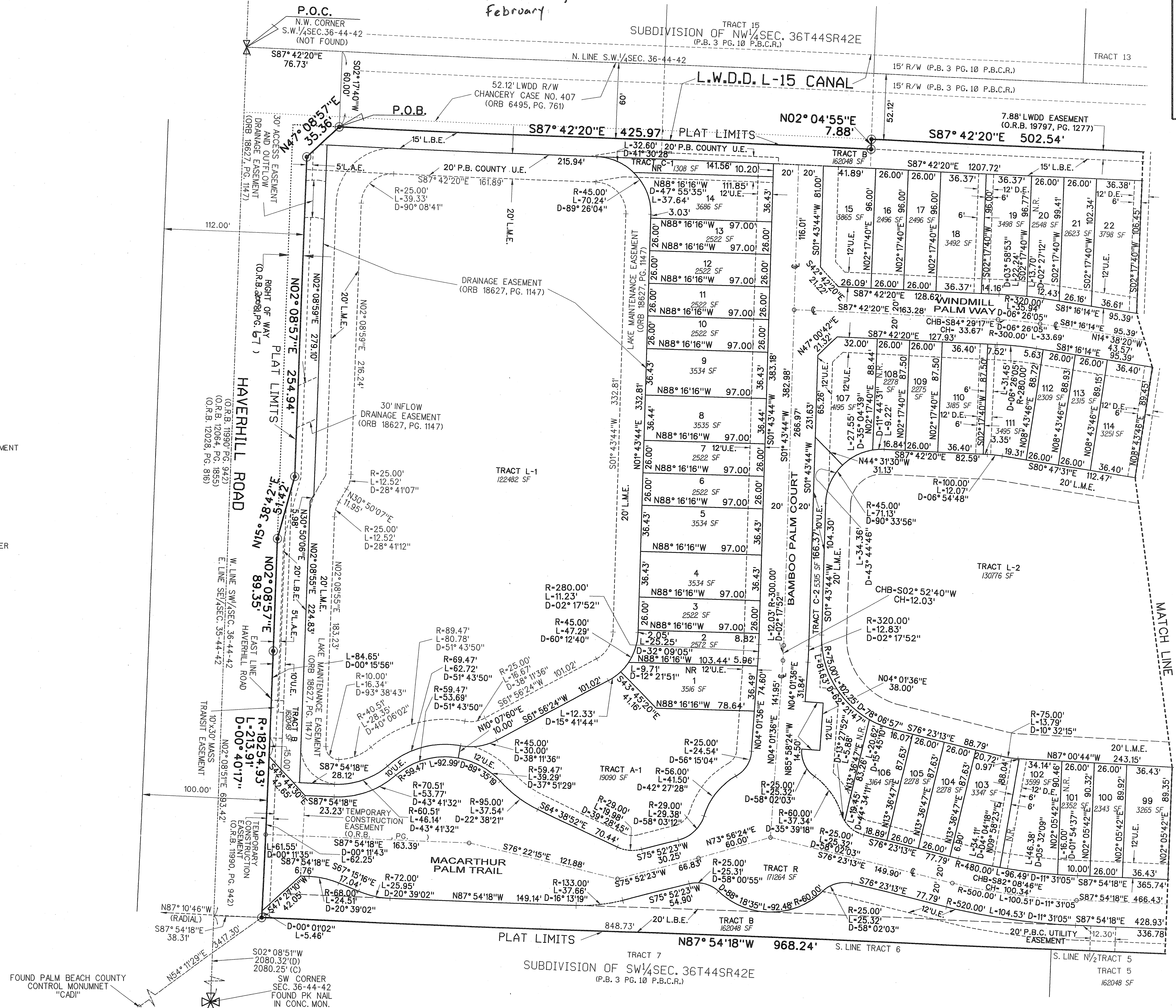
### ABBREVIATIONS:

- CH CHORD
- CHB CHORD BEARING
- CONC. CONCRETE
- COR. CORNER
- D DELTA (CENTRAL ANGLE)
- D.E. DRAINAGE EASEMENT
- L.A.E. ARLENGTH
- L.B.E. LIMITED ACCESS EASEMENT
- L.E. LICENSED BUSINESS LANDSCAPE EASEMENT
- L.M.A.E. LAKE MAINTENANCE EASEMENT
- L.S. LAKE MAINTENANCE ACCESS EASEMENT
- L.W.D.D. LICENSED SURVEYOR
- MON. LAKE WORTH DRAINAGE DISTRICT MONUMENT
- O.R.B. OFFICIAL RECORDS BOOK
- N.R. NON-RADIAL
- P.B. PLAT BOOK
- P.B.C.R. PALM BEACH COUNTY RECORDS
- P.G. PAGE
- P.C.P. PERMANENT CONTROL POINT
- P.O.B. POINT OF BEGINNING
- P.O.C. POINT OF COMMENCEMENT
- P.R.M. PERMANENT REFERENCE MONUMENT
- P.S.M. PROFESSIONAL SURVEYOR & MAPPER
- P.U.D. PLANNED UNIT DEVELOPMENT
- R. RADIUS
- R.E.E. ROOF ENCROACHMENT EASEMENT
- R/W. RIGHT-OF-WAY
- SEC. SECTION
- S.F. SQUARE FEET
- U.E. UTILITY EASEMENT
- L.S.E. LIFT STATION EASEMENT

# VERONA PALMS

## A REPLAT OF PORTIONS OF TRACTS 4, 5 AND 6, SUBDIVISION OF THE SOUTHWEST ONE-QUARTER OF SECTION 36, TOWNSHIP 44 SOUTH, RANGE 42 EAST (P.B. 3, PG. 10, P.B.C.R.), CITY OF GREENACRES, PALM BEACH COUNTY, FLORIDA.

**JANUARY, 2006**  
*February*



73